



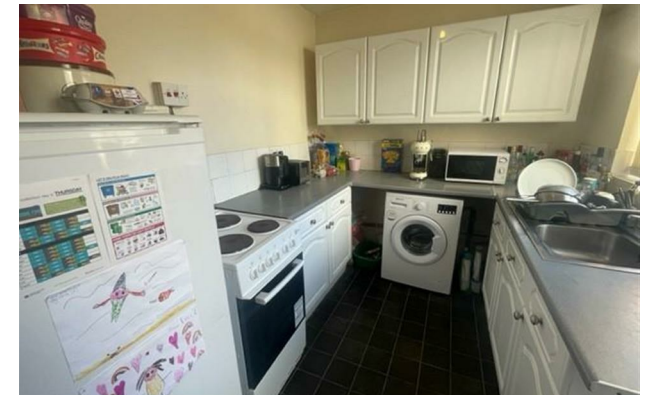
Jordan fishwick

65 Edgeworth Drive, Fallowfield, M14 6RS
£1,430 Per Calendar Month



**Edgeworth Drive Manchester
M14 6RS**

£1,430 Per Calendar Month




The Property

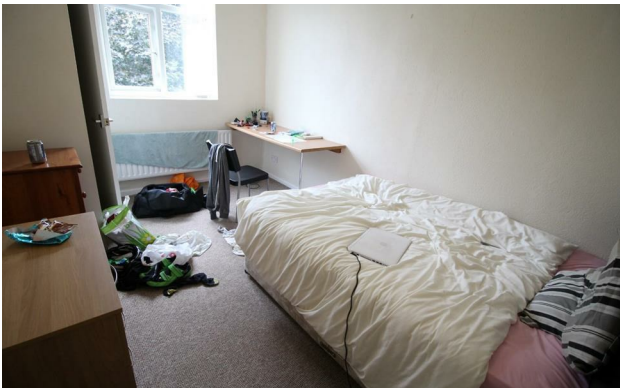
*** AVAILABLE 1st JULY 2023 *** £110.00 PPPW *** A three double bedroom student home available for the academic year 2023/24, ideally located close to local transport links to the City Centre and Universities, bars and shops. In brief, the property comprises, entrance hall, downstairs good sized double bedroom, large lounge leading to a separate modern fitted kitchen. To the first floor are a further two double bedrooms and generous bathroom. To view apply Withington 0161 438 2411.

EPC Rating - E

- Available July 2023
- £110.00 PPPW
- Three Double Bedrooms
- Fully Furnished
- Generous Living Space
- Excellent Location
- On Street Parking
- Yard



Energy Efficiency Rating		
	Current	Potential
Very energy efficient - lower running costs		
(92 plus) A		
(81-91) B		
(69-80) C		73
(55-68) D	54	
(39-54) E		
(21-38) F		
(1-20) G		
Not energy efficient - higher running costs		
England & Wales	EU Directive 2002/91/EC 	





These particulars are believed to be accurate but they are not guaranteed and do not form a contract. Neither Jordan Fishwick nor the vendor or lessor accept any responsibility in respect of these particulars, which are not intended to be statements or representations of fact and any intending purchaser or lessee must satisfy himself by inspection or otherwise as to the correctness of each of the statements contained in these particulars. Any floorplans on this brochure are for illustrative purposes only and are not necessarily to scale.

Offices at: Offices at Chorlton, Didsbury, Disley, Hale, Glossop, Macclesfield, Manchester Deansgate, Manchester Whitworth Street, New Mills, Sale, Wilmslow and Withington